



QN-100B product shown

QN-100  
QUADRO TOPMOUNT OR UNDERMOUNT  
CRISTALITE<sup>+</sup>

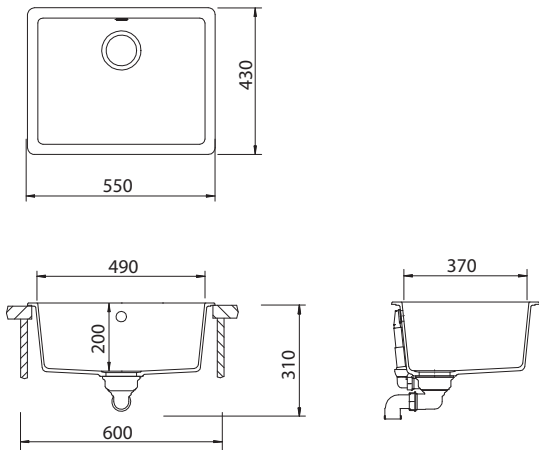
INCLUDED  
ACCESSORIES



OPTIONAL ACCESSORIES



DIMENSIONS



SPECIFICATIONS

Description	Single Large Bowl, Topmount / Undermount
Overall Sink Size	L550mm x W430mm x D200mm
Bowl Dimensions	L490mm x W370mm x D200mm
Bowl Radius	10mm
Water Capacity	22 Litres
Technic	Granite Sink
Material	Granite - Cristalite

INSTALLATION

Fixings	Fixing clips supplied
Min Cabinet Size	600mm
Tap Holes	NTH

PLUMBING

Waste Fittings	1 x (90mm x 2") basket waste included
Overflow	Included

PACKAGING

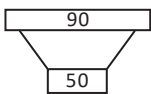
Gross Weight	14kg
Carton Size	730mm x 570mm x 300mm
Pack QTY	1

SURFACE  
FINISH



STONEY TEXTURE

WASTE KIT



MATERIAL



INSTALLATION  
OPTIONS



TOPMOUNT



UNDERMOUNT

AVAILABLE IN



QN-100W  
(ALPINA)



QN-100B  
(ONYX)



QN-100C  
(CONCRETE)



QN-100CR  
(CROMA)



QN-100N  
(NERO)