

Backrest Curved Arm

Stainless Steel Backrest for accessible application installations complying to AS 1428.1-2009.

The Backrest Curved Arm is made up of highly durable hygienic stainless steel arms and back plate and a white polypropylene pad. Providing support whilst toileting, it can also be used as a support rail. The product has been designed to meet compliance requirements of AS 1428.1-2009 - design for access and mobility.

Important : Reference must be made to AS 1428.1-2009 with current amendments to determine circulation space, grabrail and installation requirements. The dimensions in this sheet may change with amendments to the standard.

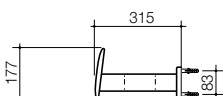
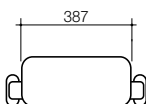
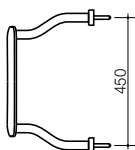
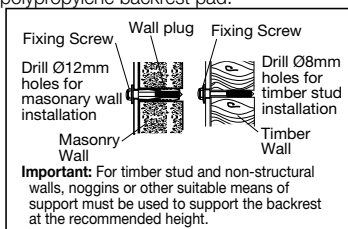
Pan: Suitable for Care Wall-Faced Back Inlet, Care Wall-Faced Close Coupled and Care Connector Suites. Install to AS 1428.1-2009 setout.

Position of the Pan: For wheel chair access the installed pan must be $800 \pm 10\text{mm}$ from the front of the pan to the finished wall and provide a seat height of 460 to 480mm.

Installation: Suitable support must be included behind the wall for fixing bolts.

Fixing: Backrest Fixing Kit. M10 zinc-plated coach bolts supplied which fixes to the finished wall.

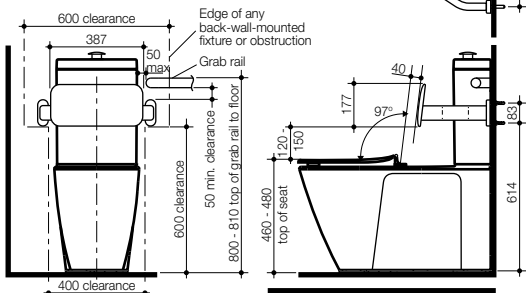
Colour: Stainless steel arms and back plate with white polypropylene backrest pad.



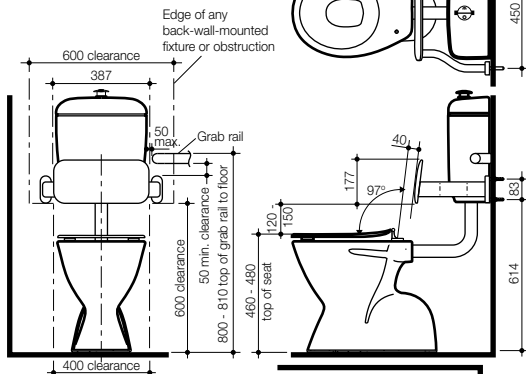
Backrest Sold
Separately

Backrest Curved Arm

Installation for Close Coupled Cistern



Installation for Connector Cistern



Installation for Concealed Cistern

